

WHAT PEOPLE IN OUR COMMUNITY TOLD US...

WHAT'S IMPORTANT IN 2050?

- 1 PEOPLE ARE SAFE, FRIENDLY, INCLUSIVE COMMUNITIES
- 2 EASY, AFFORDABLE ACCESS TO PUBLIC TRANSPORT, WALKING AND CYCLING
- 3 ACCESS TO GREEN SPACE & NATURE (SEA, MOUNTAINS)
- 4 NATURE IS PROTECTED AND RESPECTED; WASTE IS MINIMISED
- 5 ADDRESSING CLIMATE CHANGE
- 6 AFFORDABLE, QUALITY AND DIVERSE HOUSING OPTIONS
- 7 DIVERSITY IS EMBRACED AND CELEBRATED
- 8 MORE ECONOMIC ACTIVITY TO SUPPORT VIBRANCY AND JOB OPPORTUNITIES
- 9 A PLACE DESIGNED FOR PEOPLE, EASY TO GET AROUND
- 10 EVERYONE HAS SUFFICIENT INCOME AND RESOURCES
- 11 STOP FURTHER URBAN SPRAWL

WHAT'S IMPORTANT TO young people...

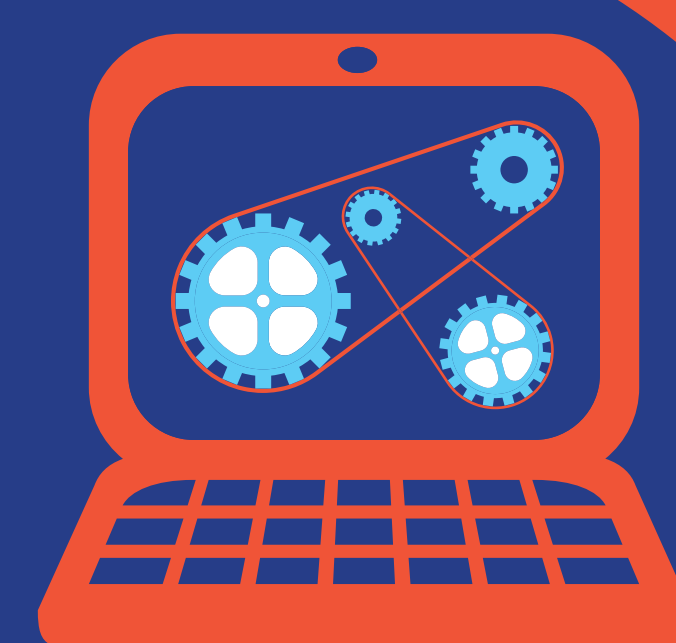
- 1 PEOPLE FEEL SAFE
- 2 AFFORDABLE & ACCESSIBLE RANGE OF QUALITY HOUSING OPTIONS E.G. TRANSITIONAL HOUSING, RENTALS, EDUCATION & PATHWAYS FOR MORTGAGES, WARM AND DRY HOUSES, HOUSES FOR BIG WHĀNAU / AIGA, HOUSING SUPPORT FOR REFUGEES AND MIGRANTS AND SUPPORT FOR THE HOMELESS.
- 3 MĀORITANGA/ MĀORI CULTURE AND WAY OF LIFE IS EMBRACED AND VALUED E.G TE REO IS SPOKEN AND HEARD AS WELL AS SEEN IN SCHOOLS, STREETS AND PLACES ALL ACROSS GREATER CHRISTCHURCH
- 4 NO RACISM AND SYSTEMIC BIAS
- 5 EVERYONE HAS ACCESS TO HIGH QUALITY EDUCATION & LEARNING
- 6 THERE IS CLEAN DRINKING WATER (NO CHLORINE), CLEAN RIVERS, CHRISTCHURCH DEALS WITH RUBBISH AND WASTE EFFECTIVELY AND IS POLLUTION-FREE
- 7 LOTS OF ARTS, CULTURAL, MUSIC, FESTIVALS, EVENTS AND ENTERTAINMENT OPPORTUNITIES
- 8 EVERYONE HAS SUFFICIENT INCOME AND RESOURCES
- 9 THERE IS LOTS OF GREEN SPACE AND TREES
- 10 CULTURAL DIVERSITY IS VISIBLE AND EMBRACED

CONTEXT

OVER
3,000
RESPONSES TO
ONLINE SURVEY



18
BUSINESS
RESPONSES TO
ONLINE SURVEY



383
RANGATAHI
INVOLVED IN
WORKSHOPS



WHAT'S IMPORTANT TO business...

BEING ATTRACTIVE
TO TALENT



ENVIRONMENTALLY
SUSTAINABLE
INFRASTRUCTURE



A VIBRANT
CENTRAL CITY



HAVING A
COHERENT
STRATEGY & PLAN

