

INSIDE

[Key milestone achieved in the Joint Housing Action Plan for Greater Christchurch](#)

[Draft Canterbury Regional Public Transport Plan \(RPTP\) Update](#)

[Other GCP Work Programme Updates](#)

[Urban Growth Partnership Collaboration](#)

[GCP farewells Jim Palmer, Independent Chair](#)

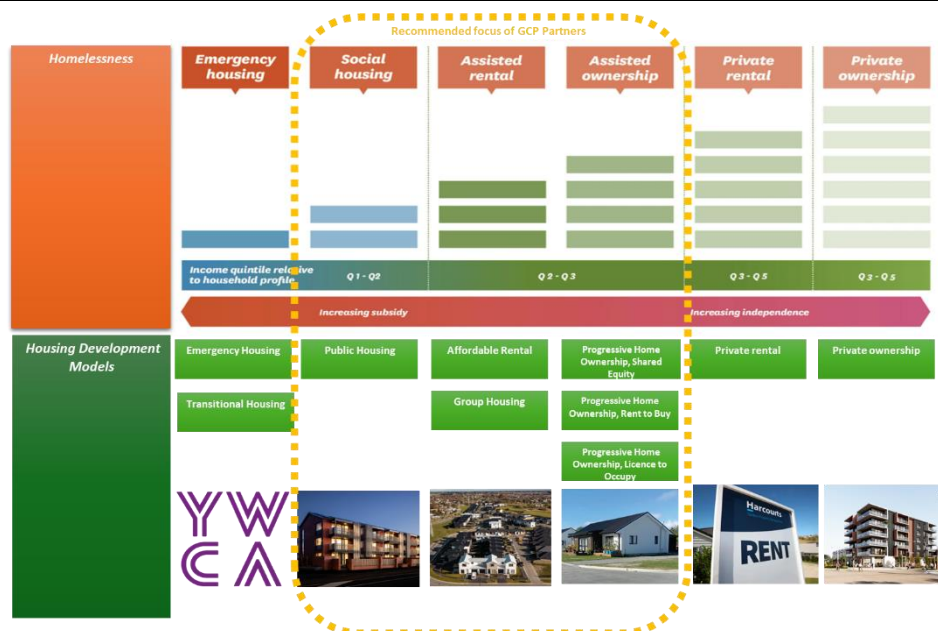
[Tracy Tierney speaks to UDINZ](#)

[New for GCP in 2025](#)

[Greater Christchurch Partnership Committee Meeting Summary 13 December 2024](#)

[Celebrating success!](#)

[Want to find out more?](#)



Key milestone achieved in the Joint Housing Action Plan for Greater Christchurch.

John Bartels, Strategic Project Lead for GCP, presented Joint Housing Action Plan (JHAP) phase 1 findings to the Greater Christchurch Partnership Committee (GCPC) on Friday 13 December. He was supported by Cate Kearney, Chief Executive of Ōtautahi Community Housing Trust and Bruce Rendall, Head of Facilities and Property at CCC.

This is the completion of a key milestone and summarised the findings of the work on Phase 1 actions of the JHAP and the extensive analysis undertaken to provide a range of options for partners to consider. This formed the basis for the workshop to understand which options the committee is interested in progressing to support the delivery of affordable housing. Feedback from this workshop (and from partner Council workshops) will inform a future report with proposed actions for implementation as Phase 2 of the JHAP.

There was general support from the GCPC for initiatives as presented. It was noted that if inclusionary housing was to be advanced it would need to be delivered simultaneously by all partner Councils. Interest was also expressed from members in making land available at low or no cost for affordable housing kept in perpetuity.

The next stage will be important to canvass which options individual partners are interested in pursuing or investigating before any further work is undertaken. Workshops have been booked with partner Councils in February 2025.

Find out more about the [Joint Housing Action Plan](#) or contact john.bartels@greaterchristchurch.org.nz

Draft Canterbury Regional Public Transport Plan (RPTP) Update



Environment Canterbury are responsible for the Canterbury Regional Public Transport Plan, a legislative document that sets out our objectives and policies for delivering public transport in Canterbury. It describes the services that propose to provide to meet the needs of new and existing customers and the policies by which those services will operate.

The refreshed Canterbury Regional Public Transport Plan 2025-2035 (RPTP) consultation was held between 25 September and 24 October. Almost 800 individuals and groups provided feedback on the draft RPTP.

Hearings were held between 18 and 25 November 2024 at Environment Canterbury (ECan). A total of 65 submitters were originally scheduled to be heard.

Deliberations, initially planned for 9 December, have been deferred to allow Environment Canterbury Public Transport staff additional time to prepare the full Officer's Report on the submissions. The new date for deliberations is 20 March 2025.

There has resulted in a change to timeline for the adoption of the Regional Public Transport Plan (RPTP) 2025-2035. The adoption of the RPTP is now scheduled for June 2025.

For further information on the draft RPTP and to read the submissions [visit the ECan website](#)

Work Programme Updates

Priority Development Area Update -

Work by officers on establishing the Priority Development Areas (PDAs) Programme has been further progressed with John Bartels joining the GCP Secretariat in August. This work is advancing through the Senior Officials Group. Collaborative work to unlock growth opportunities in each PDA through catalyst projects is anticipated to formally commence as early as practicable in 2025. The beginning of regular six-monthly reporting to the GCPC on PDA progress is intended to follow in the subsequent months, noting that maturity of the programme and the reporting will evolve over time. We will continue to work and engage collectively with all GCP partners as this work develops. A further update will be provided at the May GCPC 2025 meeting.

We will keep you up to date as the work develops. Check out our website for more information on [PDAs](#)

Monitoring and Reporting Framework for the Greater Christchurch Spatial Plan (GCSP) -

Work continues of phase one of the project to monitor residential capacity as required by the NPS-UD. The approach to monitoring and reporting both the Future Development Strategy and GCSP will be included in the Implementation Plan. The intent is to get the first report to the first GCPC meeting in 2025.

As the GCP work programme develops and matures as projects become active and are progresses, so too will the monitoring reporting.

Urban Growth Partnership Collaboration

Urban Growth Partnerships (UGP) such as the GCP are partnerships between the Government, local government and iwi. There are six established UGPs in high growth urban areas across New Zealand.

The UGP Programme Directors/Leads meet quarterly (usually online) to collaborate, discuss matters of mutual interest and to proactively share resources and knowledge. UGP representatives met in Wellington on 20 November along with invited senior crown officials and other subject matter experts. Key matters discussed were:

- Affordable housing initiatives
- Infrastructure Priorities Programme
- Proposed RMA changes and their impact on Future Development Strategies/Spatial Plans
- Impact of Fast Track applications / out of sequence development processes
- Progress with implementation plans / annual reporting

Given the collective UGPs represent the majority of the population of New Zealand Aotearoa there may be value in targeted joint initiatives and advocacy. This was discussed at the GCPC meeting on 13 December who provided their support of their respective committees to further investigate opportunities to share expertise, work together on common issues and to advocate collectively where it would be advantageous to do so.

Farewell Jim Palmer, Independent Chair



We are sad to announce that Jim Palmer, independent chair for GCP, chaired his last committee meeting on Friday 13 December. A role he has held since his appointment to

the role in April 2021.

Prior to his role as independent chair, Jim was the Chief Executive of the Waimakariri District Council. A position he held for 17 years and sat as a contributing partnership member on the Chief Executive Advisory Group throughout that time.

The Greater Christchurch Partnership Committee acknowledged Jim Palmer for his significant contributions to the Greater Christchurch Partnership in various roles over many years.

Tracy Tierney speaks to UDINZ



Tracy Tierney Director of the partnership spoke to UDINZ at their Regional Anniversary Breakfast event on Wednesday 13 November.

Tracy Tierney shared the process of developing the spatial plan and the collaborative approach of the partnership, as well as outlining the strategic long-term priorities for the sub-region.

UDINZ members are a cross-section of people involved in building New Zealand communities, from developers to

contractors, designers, planners, architects and engineers, through to materials suppliers, research agencies, financiers, real estate agencies, lawyers, accountants, councils and central Government.

New for GCP in 2025

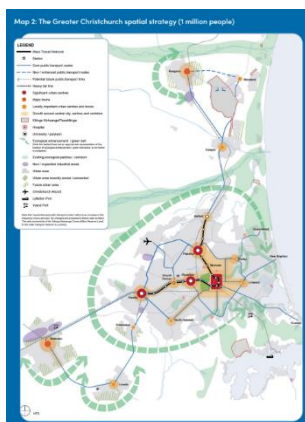
The 2025 Greater Christchurch Partnership governance schedule has been confirmed. We are excited to let you know we will be livestreaming all public sections of future GCPC meetings from the first meeting in 2025.

In early 2025, the GCP newsletter will be released in a new electronic format. This will be shared with all existing stakeholders via email that will link to a refreshed GCP website with enhanced functionality. Interested stakeholders will also be able to subscribe to our website to receive newsletter and updates. Both enhancements will help to provide us greater opportunities for reach with our communications and share progress as well as to gather engagement data.

Keep an eye out on our [meetings page](#) for livestream links and meeting information.

Celebrating success!

Several great milestones have been achieved by the partnership this year, here's a reminder of some of the big ones:



The **Greater Christchurch Spatial Plan** was unanimously endorsed by the Greater Christchurch Partnership Committee on Friday 16 February 2024. In March 2024 all Partner Councils also adopted the Greater Christchurch Spatial Plan as their Future Development Strategy.

The GCPC endorsed the **Joint Housing Action Plan** was adopted by all Partner in March 2024.

The **Huihui Mai** communication and engagement campaign had been selected as a finalist in the Public Relations Institute of New Zealand (PRINZ) awards. We are pleased to announce that it was awarded Gold in the community relations and engagement category.

We want to thank all our partners for their contribution to these significant achievements.



Greater Christchurch Partnership Committee Meeting Summary 13 December 2024

The purpose of the [agenda](#) on Friday 13 December sought the GCP Committee's on views and feedback on the findings from the phase 1 investigations and sought decision on a review of the GCP. There were also updates on draft Greater Christchurch Transport and Mass Rapid Transit Project update. Below provides a summary of the purpose and outcome of each item:

Draft Greater Christchurch Transport Plan (GCTP) Update - Jesse Burgess, Chair of the GCP Transport Manager Group, presented an update to the committee shared the GCTP plan on a page. The summary provided a high-level overview of the purpose, principles, direction and actions proposed to form the foundations of the plan itself. The full draft Greater Christchurch Transport Plan will be presented to the committee for their review and feedback at the 6 March 2025 meeting. Following their review the plan would be finalised and presented back to the committee to seek their endorsement at the 23 May 2025 meeting.

Mass Rapid Transit (MRT) - The Indicative Business Case (IBC) was approved by the committee, partner councils and the Waka Kotahi Board in July 2023. Following this the project entered an addendum phase preparing for the Detailed Business Case (DBC) phase. This preparatory work included completing an IBC technical review, reviewing the implications of PC14, and undertaking land use and staging development. The land use and staging work for MRT is now finalised and a summary of this was presented to the committee by NZTA. This closes out NZTA's role in leading this on behalf of the GCP.

While the project was not allocated funding in the current National Land Transport Programme, discussions are underway next steps within the partnership around next steps for continuing this work. These include continuing to build up patronage on the existing public transport system, through the PT Futures programme and progressing an investment case to investigate protecting the route via a district plan designation. NZTA is in discussions with CCC and wider partners about transitioning the project and a handover of the work to date. We are grateful to our NZTA colleague for leading this work to date through the IBC phase.

Secretariat and work programme update - This update provides a robust update on a range of activity that the GCP has undertaken since the August update.

Joint Housing Action Plan (JHAP) Progress Update

Greater Christchurch Partnership Review - The purpose of this report is to consider a timely review of the form, function and focus of the Greater Christchurch Partnership in 2025.

The partnership has effectively been in place for 20 years. There have been significant changes over that period so it is timely and healthy to review the Partnership to see if it is set up to succeed to meet the future outcomes that Partners are seeking. The review will provide an opportunity for partners to reflect on the effectiveness of the committee in meeting their collective objectives now and in the future. Other Urban Growth Partnerships have undertaken similar review/health checks in recent times and valued the reflections and recommendations that followed.

View the [full agenda](#) for the meeting to review the reports in detail or the [meeting notes for resolutions and decisions](#). Please contact the secretariat@greaterchristchurch.org.nz for any questions you may have.

Want to find out more?

Agendas and minutes for the Greater Christchurch Partnership are available at <https://greaterchristchurch.org.nz/meetings/>

For further information on the Greater Christchurch Partnership visit www.greaterchristchurch.org.nz or contact secretariat@greaterchristchurch.org.nz



**Greater Christchurch
Partnership**
Te Tira Tū Tahī
One Group, Standing Together