

# Open Space Strategy

Christchurch/Ōtautahi and Banks Peninsula/Te Pātaka o Rākaihautū

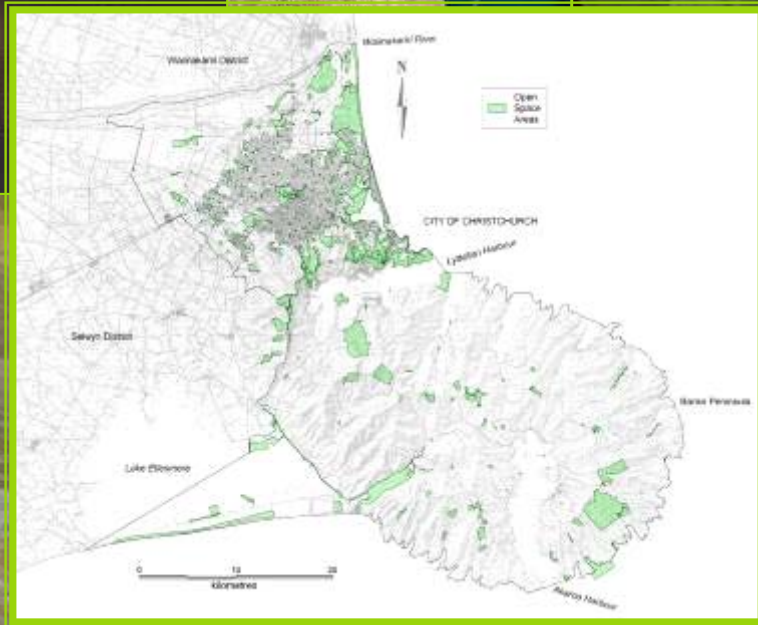


# Open Space defined

Publicly accessible;

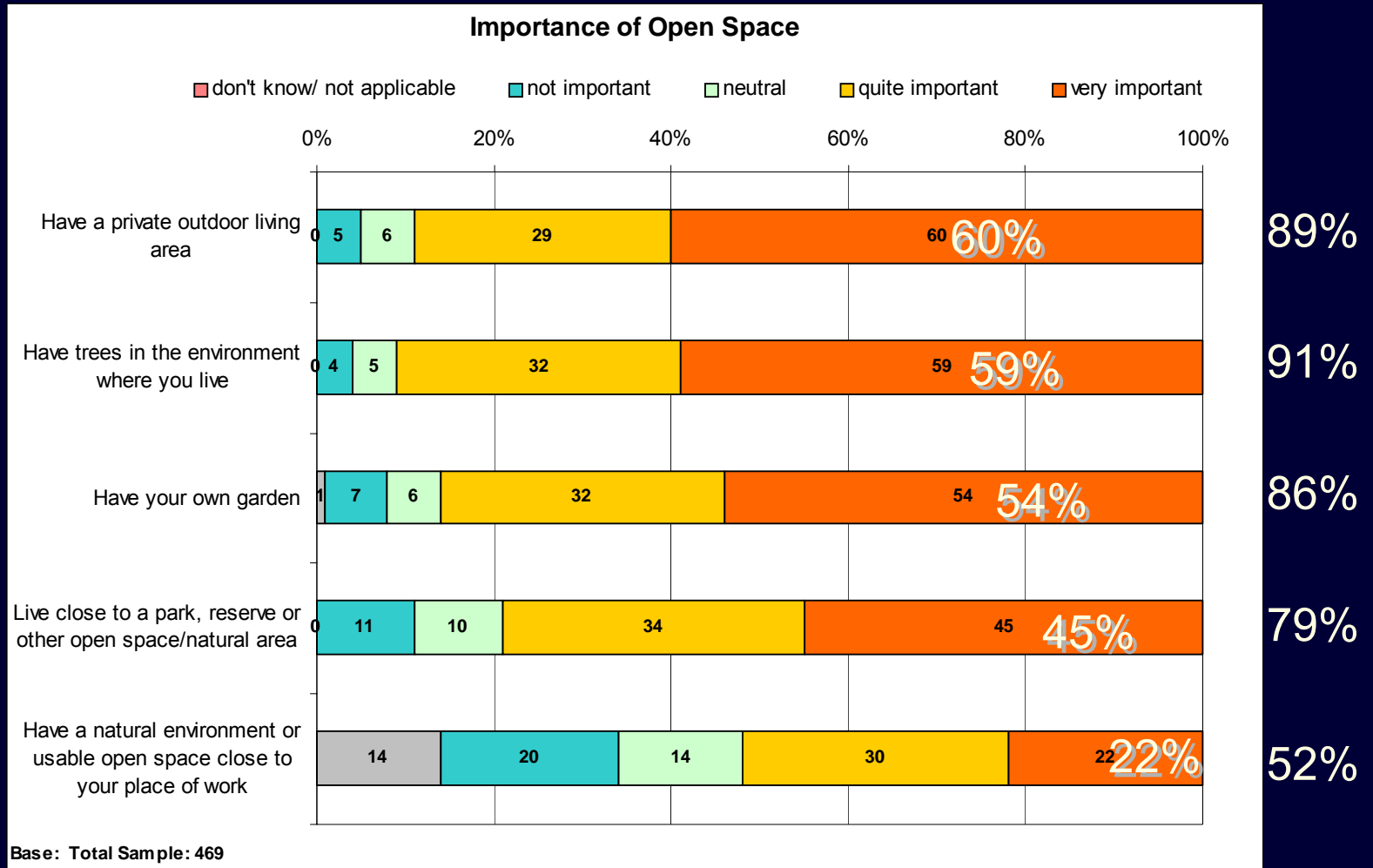
- Green space
- Blue space
- Civic & Street space





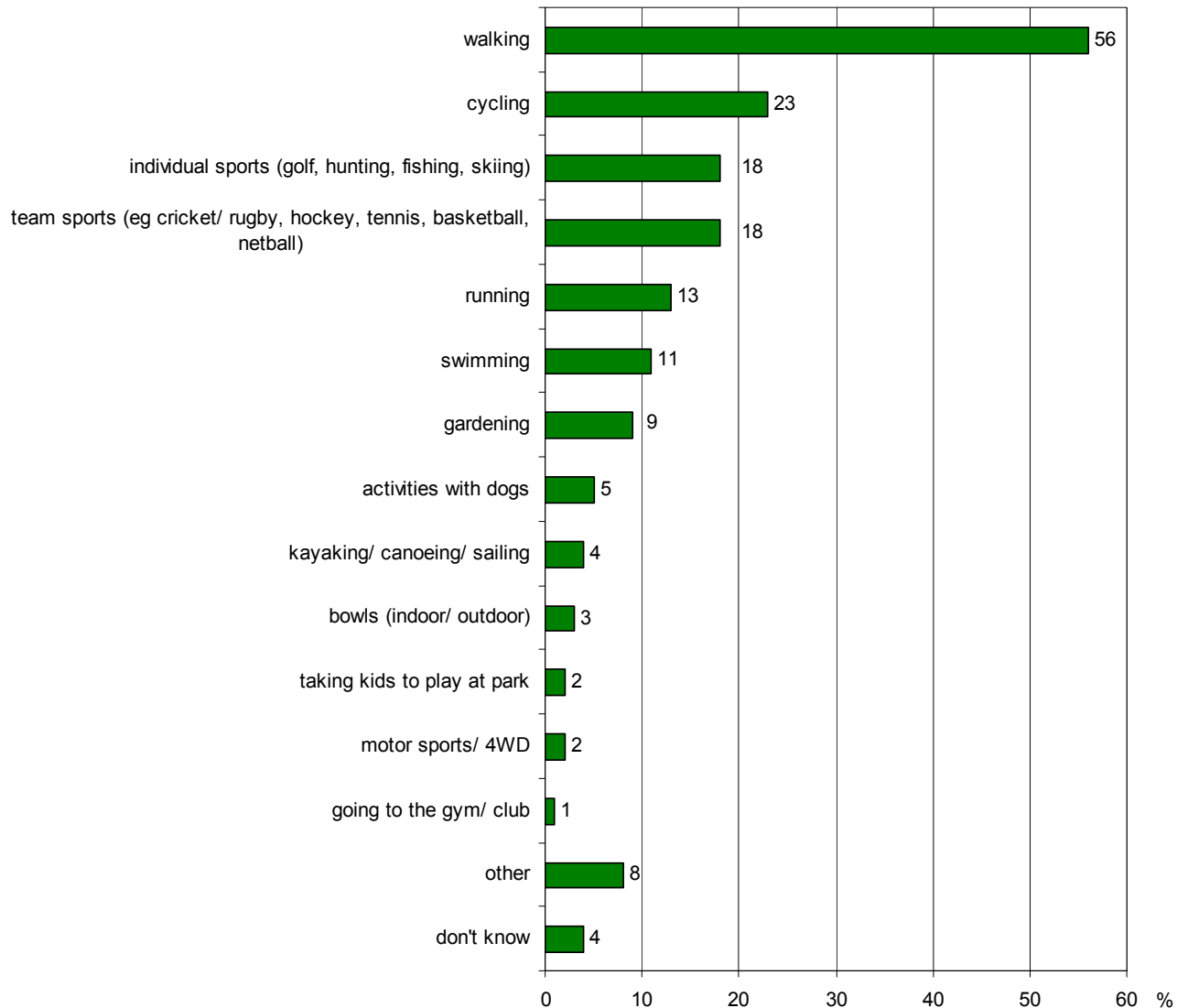
AC

# Public perceptions of private & public open space



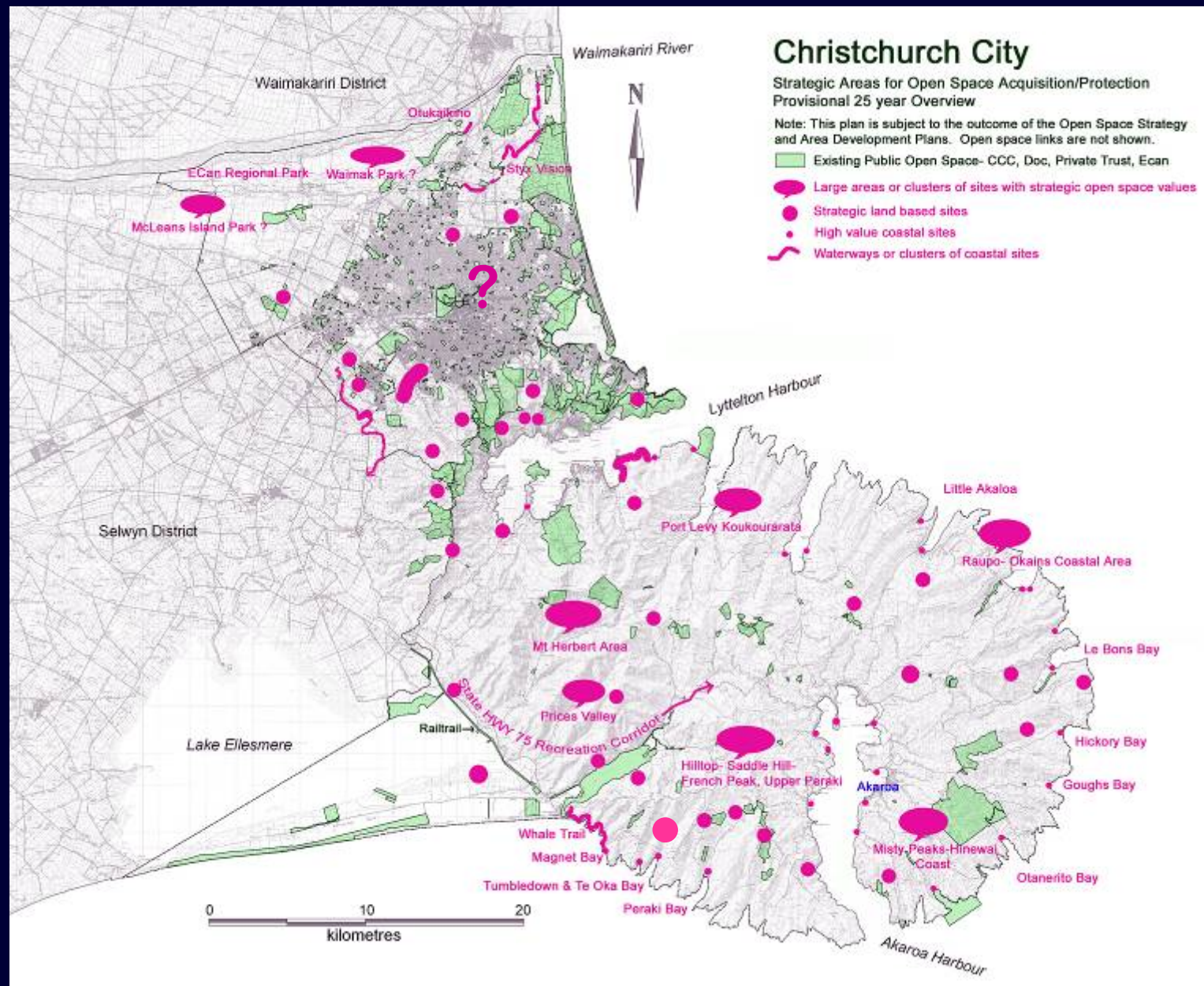
# Most Important Outdoor Activities

Incidence of Outdoor Exercise or Sporting Activities

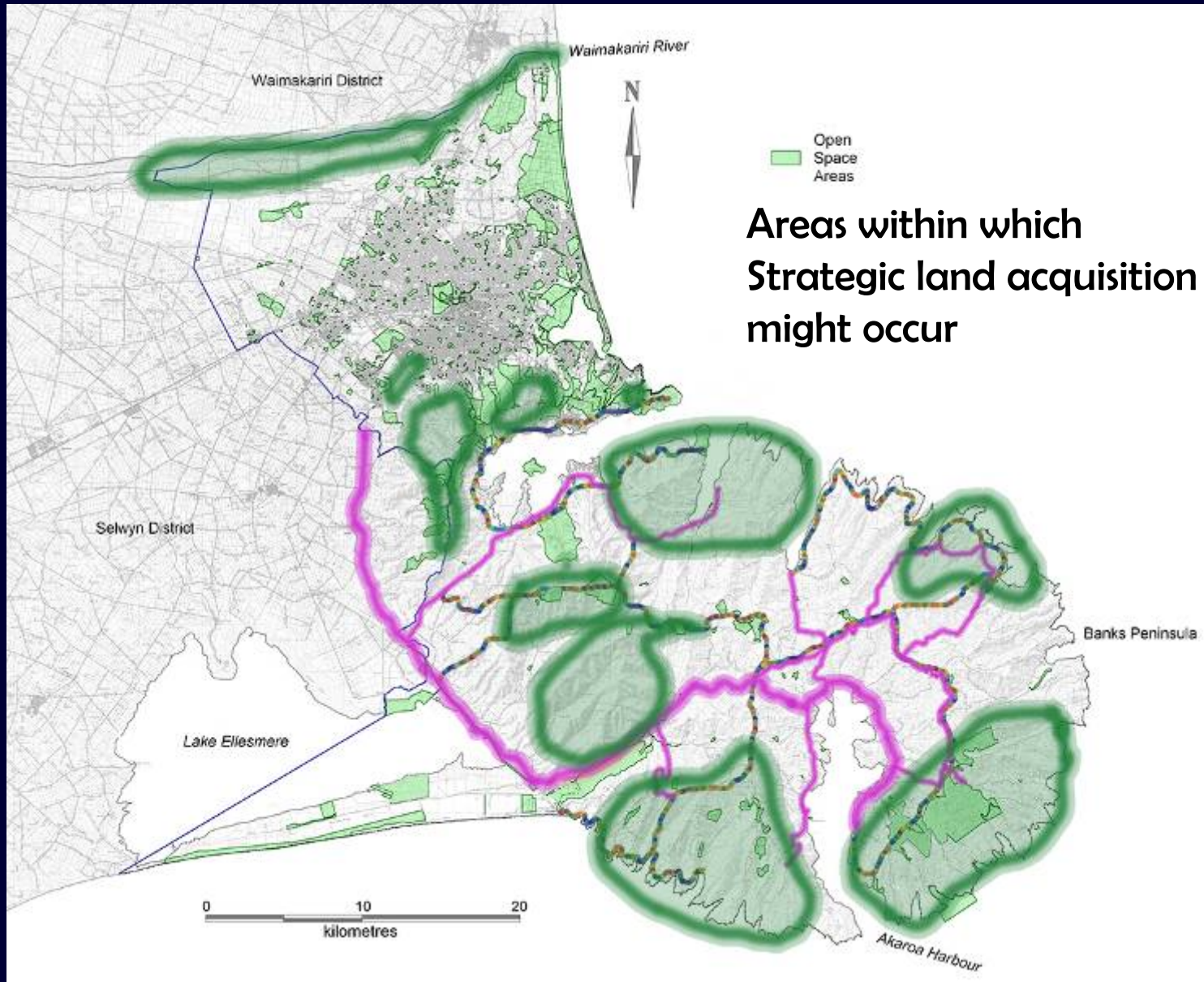


Base: Total Sample: 469

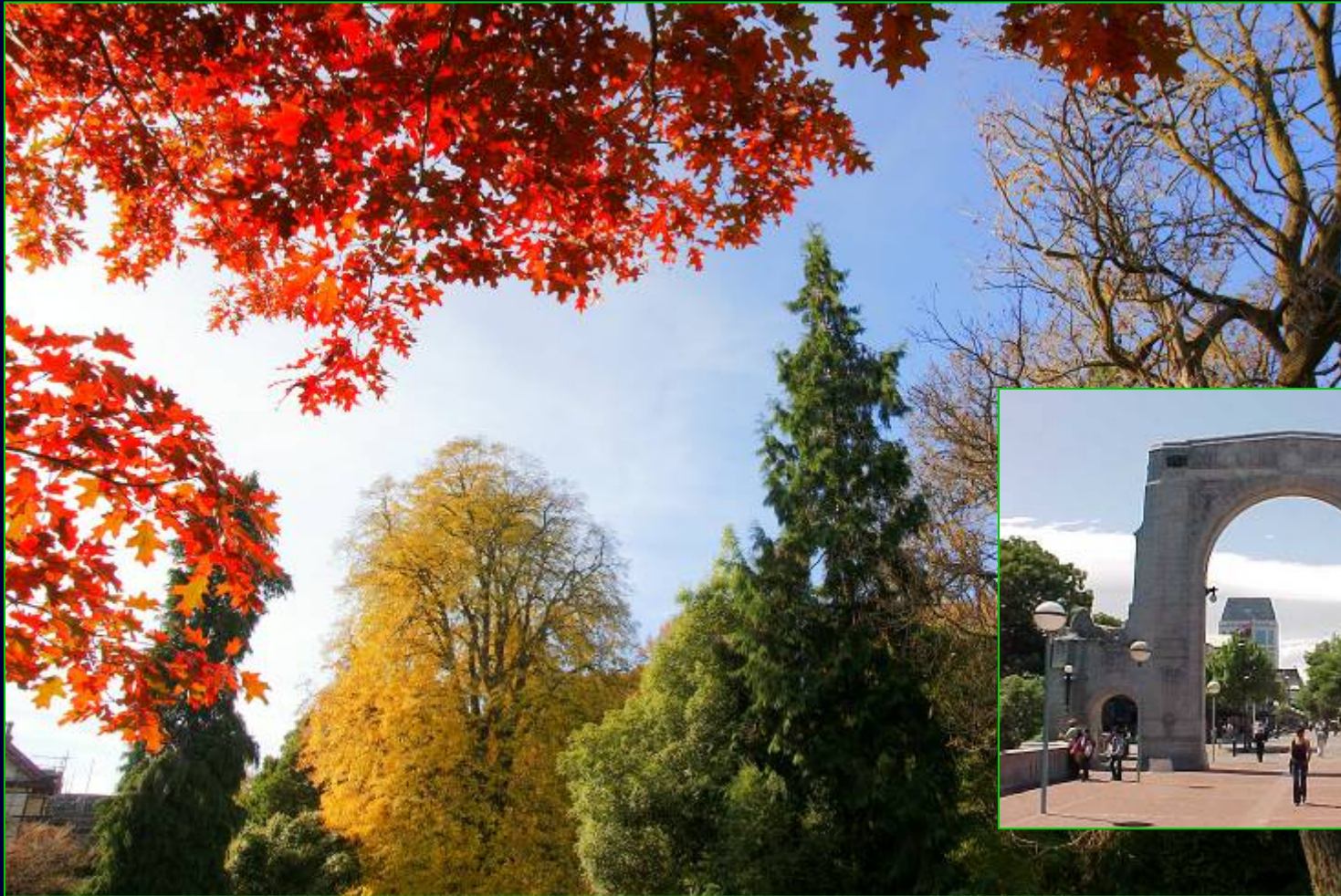
# Open Space issues; Connectivity & overview?



# Regional Park Concept

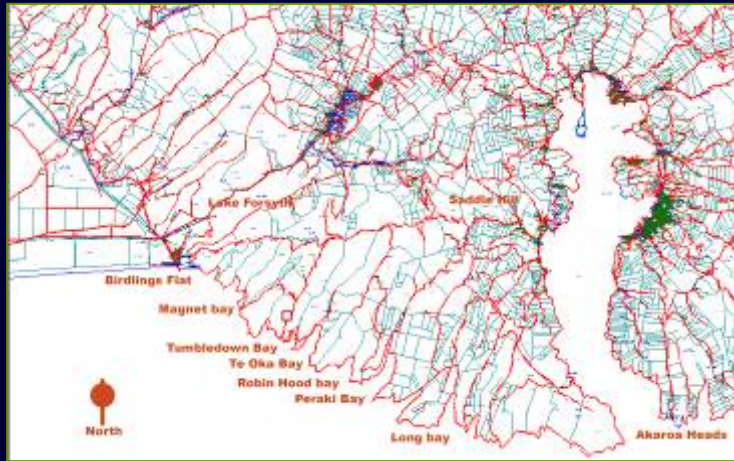


# UDS; Intensification with quality?

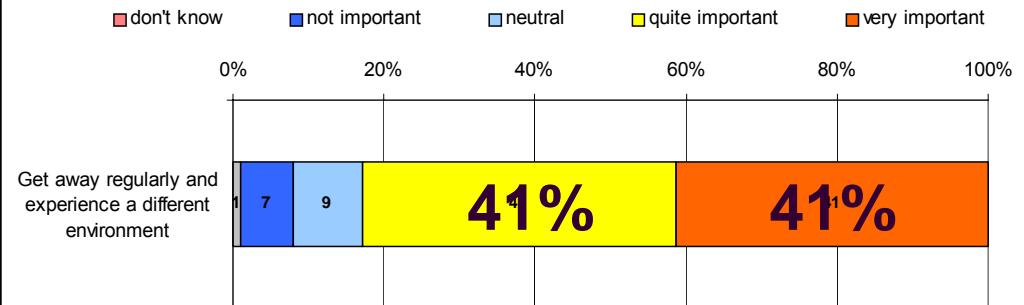


“Be gentle with Christchurch... I love it here! And please look after our water quality, streams and parklands – we need these magical places... and take care of those hills! We don’t want to live in a Wellington...” UDS submitter

# Access & facilities?



## Importance of Experiencing a Different Environment



Base: Total Sample: 469

Two thirds had visited the wider Christchurch and Banks Peninsula area more than six times in the past year.

# Open Space Issues to resolve?

- Urban consolidation/ inner city
- Making the city green/ garden city
- Providing an open space overview
  - inner city
  - intensification areas
  - green fields
  - townships
  - small settlements
- Urban boundary /greenbelt
- Access to coast, bays, rural areas, paper roads
- Heritage protection/ biodiversity
- Partnership- other open space providers
- Development contribution

sophisticated



classic



basic