



Strategic Partners Forum Agenda Meeting 1

- Welcome and Introductions
- Presentation & Discussion on UDS
- Strategic Partner Information Needs
- Agenda & Information Circulation- email
- UDS Contact Details
- Other Matters



Growth Management in Greater Christchurch

Strategic Partners Forum

20 July 2007



Welcome and Acknowledgements

- Welcome and thank you for attending the first UDS Strategic Partners Forum
- The forum is an essential element of UDS implementation and will over time provide both a community audit on implementation and guidance to partners on implementation matters



Presentation Summary

- The collaborative and partnership approach
- Highlight key growth management challenges
- Provide overview of the UDS
- Strategic Partner Forum Terms of Reference & partner requirements





Collaboration and Partnership

- Collaborative project (4 partner Councils, CCC, WDC, SDC, ECAN, Transit NZ)
- Recognition that without this approach, strategy development and implementation much more difficult
- Assists with having “one Greater Christchurch voice” on the key issues



Purpose and Emphasis

- **UDS takes principled yet pragmatic approach, based on 3 assumptions;**
 - growth continues
 - partner Councils have statutory obligation to manage growth
 - expectation that Councils take integrated and collaborative approach in doing so



Growth Management Challenges

- **Ensuring infrastructure keeps apace with growth and using the funding tools available to enable this to occur**
- **Implementing key policy documents**
- **Integrating land use and transportation**
- **Maintaining and implementing a collaborative approach to ongoing implementation**



What is happening in the Greater Christchurch (1)

- **Population**

2006- 413,510

2026- 501,300 (21%)

2041- 548,520 (9%)

- **Households**

2006- 164,100

2026- 212,900 (30%)

2041- 238,910 (12%)

- **Labour Force**

2006- 221,900

2026- 260,400 (17%)

2041- 269,400 (3%)



What is happening in the Greater Christchurch (2)

- Increase of 75,000 households over 35 years to 2041
- 2/3 of this in first 20 years
- Labour force growth slows significantly in later years beyond 2026



Strategy Approach- Six Themes

- Enrich lifestyles
- Enhance environments
- Encourage prosperous economies
- Manage growth
- Effective governance and leadership
- Integrate implementation

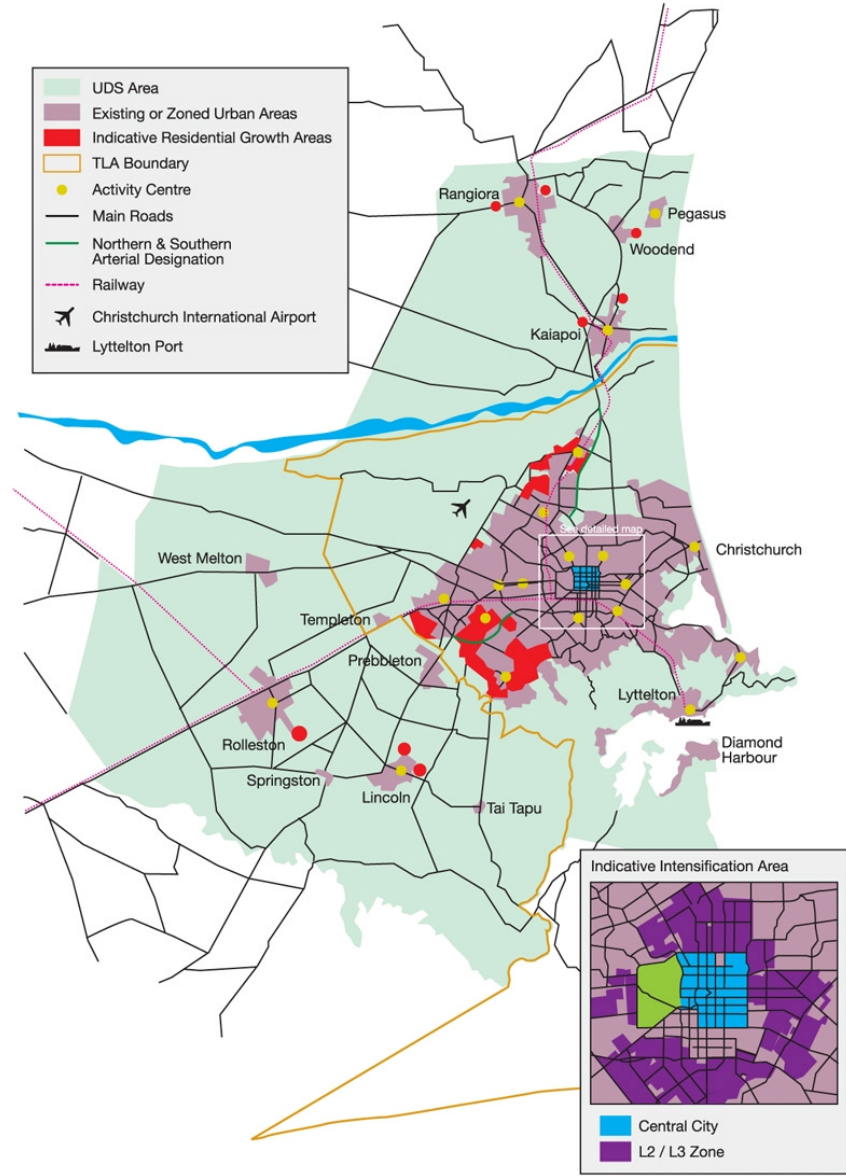


Proposed Settlement Pattern (1)

- Development within Christchurch and towns e.g. Rangiora, Kaiapoi and Rolleston, Lincoln- 71% of household growth in City, 16% in Selwyn and 13% in Waimakariri
- Greater focus on intensification with Christchurch City



Indicative UDS Settlement Pattern



Transportation & Growth Management

- UDS establishes a long term land use pattern for the sub-region, including corridor approach (interrelationship of uses)
- This will form a major component of the Regional Land Transport Strategy (RLTS) being reviewed now
- Lack of adequate and timely transport corridors can hinder managed growth
- Lead infrastructure encourages and supports managed growth approach



Transportation and Growth Management (2)

- RLTS will identify all regional transport priorities for the next 10 years as well as funding challenges and include consideration of travel demand management and model shift





Effective Governance and Leadership (1)

- Strategy success directly related to quality of working relationships
- Voluntary and co-operative governance
- Formal governance and management structure out to at least September 2010



Effective Governance and Leadership (2)

- Joint Implementation Committee (partner councils) with Independent Chair
- Implementation Manager
- Implementation Management Group- senior staff
- Chief Executives Advisory Group
- Strategic Partners Forum



Effective Governance and Leadership (3)

- Terms of Reference for Strategic Partners include:
 - monitoring of implementation by acting in community audit role
 - provision of information and input to UDSIC
 - develop issues/ recommendations for presentation to UDSIC
 - provide for strategy implementation information out to partner organisations

Implementation

- Change to Regional Policy Statement to anchor key strategy element (urban growth, settlement patterns and infrastructure, covering Greater Christchurch)
- Amendments to the Regional Land Transport Strategy-key strategies and projects
- Amendments to Long-Term Council Community Plans and District Plans
- Identifying priorities in the Land Transport New Zealand's, and Transit New Zealand's 10 year programmes
- Identifying funding gaps and taking action to close them.





Benefits

- Greater Christchurch agreed growth strategy implemented through RPS, RLTS and District Plans and ongoing collaboration
- Provides for greater certainty and direction
- Provide for a:
 - Contained urban growth pattern- intensification
 - Cooperative approach to governance, management and funding
 - Greater alignment between land use and transport



Proposed Focus for the Next 12 Months

- **Implementation of governance and management arrangements with Implementation Manager commencing on 6 August. Governance arrangements already in place**
- **Regional Policy Statement (RPS) to be notified on 28 July 2007 to anchor key strategy elements- settlement pattern and urban limits**
- **RLTS review with notification in September 2007**
- **Working with agencies on strategy implementation.**
- **Range of other strategy actions for implementation including Top 20 actions**



Strategic Partner Forum Needs

- What do partner organisations need in way of information to circulate to their members/ staff to heighten understanding of UDS and enable discussion and input into implementation?
- How would partners like to receive information on implementation progress?

Discussion

- Questions and Discussion

